

Jan 21, 2021, 09:11am EST | 103 views

View The Winter Show's Jewelry From The Warmth Of Your Home



Beth Bernstein Contributor ⓘ ⊕

Watches & Jewelry

I write about modern and antique fine jewelry.



From Kentshire's Virtual Shop at the Winter Show Online 2021, a pair of French early 19th Century ...

[+] THE WINTER SHOW

Winter Show at The Park Avenue Amory In NYC where some of the most enticing and dream-worthy ancient, antique and vintage jewelry can be found. This year for all of us who are looking for jewelry fix, we are still in luck, [The Winter Show](#) has gone virtual with a highly curated selection of museum quality and rare jewels. And what makes it even more fun is that we can wear our sweatpants and a T-shirt and don't even have to dress up our top half like we do for our Zoom meetings unless we want to chat live about a piece we are interested in.

The virtual show which will open to the public on January 22 and run through January 31, 2021 features leading international dealers that represent a global mix of fine and decorative arts from ancient times to the present day. First established by East Side House Settlement in 1954, it is the longest running art, antiques, and design fair, established to benefit the community-based organization's critical mission serving the Bronx and Northern Manhattan. All net proceeds from The Winter admissions, and any additional donations directly benefit East Side House.

Executive Director Helen Allen says, "We have worked to create a virtual format that is interactive, and we are excited to bring The Winter Show to an even greater international audience through our new online platform."

Previewing the site I was able to click on the online shops I wanted to visit and check out the digital presentations, and then view each piece in detailed close-up and different views. Each company exhibited approximately 20 works in their virtual space. There is a "Start a Conversation" button in which you can speak the dealers directly while you are on the site.

Here are some of the outstanding pieces from the jewelry exhibitors as shown on the site:

JAMES ROBINSON, INC.

[Start a Conversation](#)



James Robinson's Virtual Shop at Online The Winter Show 2021 THE WINTER SHOW

These multi-drop Victorian chandelier earrings feature lively rhodalite garnets and black enameling that pop the color and the gold.

[BACK TO GALLERY](#)



Victorian Earrings

Circa 1870

18kt Gold

2"

Description

Victorian Period Black Enameled 18kt Gold,
Rhodalite Garnet & Pearl Pair of Earrings

\$18,000

JAMES ROBINSON, INC.

[Send an Email](#)

[Send a Text](#)

Telephone:

+1 (212) 752-6166

Scroll for additional images



James Robinson's Victorian Earrings, Circa 1870 THE WINTER SHOW

This 18th century French 18K and silver topped gold necklace is an outstanding representation of the type of collet closed back settings and rose cut diamonds that were used during that period. Diamonds were wore in the evening to glow in the candescence of soft candlelight.

[BACK TO GALLERY](#)



18th Century Necklace

Circa 1790

18kt Gold & Silver

French Mark

15 1/2"

Description

French Rose Diamond Necklace mounted in Silver & 18kt Gold – ±25cts/tot

\$99,000

JAMES ROBINSON, INC.

[Send an Email](#)

[Send a Text](#)

Telephone:

+1 (212) 752-6166

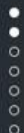
[Scroll for additional images](#)



James Robinson's 18th French Century Necklace THE WINTER SHOW

MACKLOWE GALLERY

[Start a Conversation](#)



Intricately interlocking and patinated in a manner so as to look ancient, the metalwork on this piece gives the appearance of an arabesque relic. Meanwhile, the delicacy of the Favrite glass shades and the warmth they emanate balance beautifully the satisfying weight of the concentric metalwork.



Macklowe Gallery's Virtual Shop at The Winter Show Online THE WINTER SHOW

foliage with impeccably arranged enameling and gemstones that belied the artistic expression of the period.

[BACK TO GALLERY](#)



Henri Dubret
A Basse-Taille Enamel and Gem-Set Plaque-de-Cou Necklace
c. 1903
Oval-cut emerald (weighing approximately 0.15 carat); 134 Old mine and rose-cut diamonds (approximate total weight 1.27 carats); Pearl; Basse-taille enamel; Platinum; 18K Gold; Velvet ribbon

Signed: H. Dubret with French assay stamp
2 in. length x 1 1/2 in. width

Description
Dating from the Art Nouveau period, this sophisticated gold and platinum plaque-de-cou necklace by artist Henri Dubret is a gem-set and enamel masterpiece of polychrome butterflies, flowers, and foliage. A diamond blossom centering an oval-cut emerald sits amidst three... [MORE](#)

\$100,000

[MACKLOWE GALLERY](#)

Macklowe Gallery's Art Nouveau plaque-de-cou necklace is by Artist Henri Dubret [THE WINTER SHOW](#)

Macklowe Gallery features another Art Nouveau masterpiece composed of plique-a-jour enameling, demantoid garnets and diamonds. A museum quality piece of which only one was made by Peter Wolfiers.



Philippe Wolfers (Belgian, 1858 - 1929)
An Art Nouveau Necklace
Circa: November 1901
Cushion-shaped demantoid garnet (weighing approximately 1.50 carats); 13 Old European-cut diamonds (approximate total weight 0.65 carat); 18K Gold; Together with original fitted box

Signed: With maker's PW monogram; stamped "Ex Unique" for "Exemplaire Unique" to indicate that a single example was made

Pendant: 3-3/16" length x 2-1/8" width;
necklace: 17-1/4" length

Provenance
Sold by the artist to Madame C. (New York)
Antwerpen 1903 mentioned in the collection of Madame von H.
Sold at Sotheby's New York 15 April 1999;
Private collection, Belgium through Veronique Bamps

Description
A masterwork of Art Nouveau jewelry, this elegant gold pendant necklace is composed of plique-à-jour enamel, en plein enamel, demantoid garnet and diamonds. A sensitive representation of the European plane tree, the delicately shaded greenish gray, blue and red enamel... [MORE](#)

\$175,000

[MACKLOWE GALLERY](#)

[Send an Email](#)

[Send a Text](#)

Telephone:
212-644-6400

Macklowe Gallery's Phillip Wolfers Art Nouveau Necklace, circa 1901 [THE WINTER SHOW](#)

LES ENLUMINURES

[Start a Conversation](#)

Scroll image to activate detail



Les Enluminures Virtual Shop at The Winter Show Online 2021 THE WINTER SHOW

Les Enluminures' pristine representation of a 18th century mourning ring with enamel and diamonds and with the inscription that translates from French into "Friendship Gives".

[BACK TO GALLERY](#)

Mourning Ring with Urn
c. 1760-1780
Gold, silver, enamel, diamonds

Weight 3.7 gr; Circumference 52.5 mm.; US size
6 1/4; UK size M 1/2

Description

Diamonds are eternal. This mourning ring expresses the idea that love and friendship transcend death. A white enameled urn studded with diamonds is held by an inscribed band. The inscription reads, "L'AMITIE LA DONNE" or "Friendship Gives." This ring is a beautiful rep... [MORE](#)

\$12,000

LES ENLUMINURES

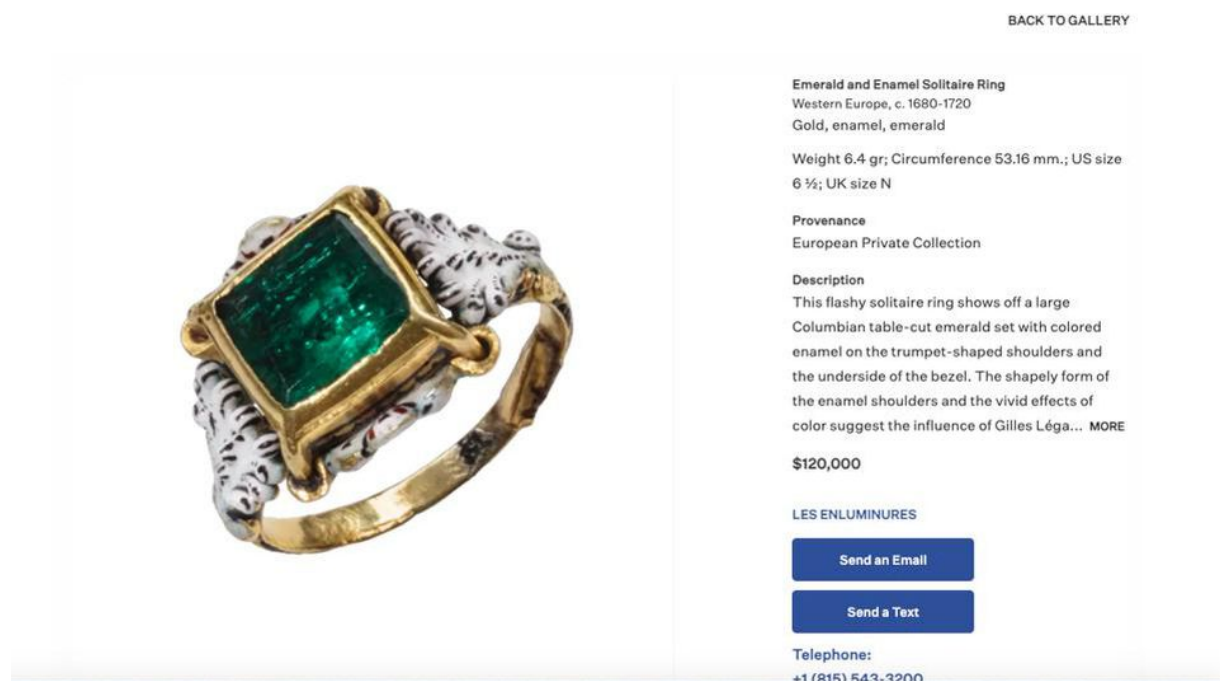
[Send an Email](#)[Send a Text](#)

Telephone:

+1 (815) 543-3200

Les Enluminures' mourning ring with urn, circa 1760-1780 THE WINTER SHOW

Les Enluminures' Columbian emerald and enamel ring, which dates to the late 17th century/early 18th century. It is the type of piece you would find in a permanent museum jewelry collection—a true sight to behold.




Les Enluminures' Emerald and Enamel Ring dating late 17th to early 18th century THE WINTER SHOW



S.J. Shrubsole's Virtual Shop at The Winter Show Online 2021 THE WINTER SHOW

S.J. Shrubsole's 19th Century Etruscan Revival brooch created by Castellani during the Grand Tour and archeological periods, both lending to the design of this micro mosaic beauty.

S.J. Shrubsole's 19th Century Etruscan Revival brooch created by Castellani during the Grand Tour and archeological periods, both lending to the design of this micro mosaic beauty.



Castellani
Etruscan Revival Micromosaic Brooch
London c. 1860
Length: 2.31 in.

Description
Perhaps we can credit Napoleon's excavations in Egypt with the explosion of interest in archaeological artifacts that came about in the 19th century, or perhaps the more direct explanation is the burgeoning tourist industry and the opening of Etruscan tombs. In any cas... [MORE](#)

\$19,500

S.J. SHRUBSOLE

[Send an Email](#)

Telephone:
+1 (212) 753-8920

Scroll for additional images
↓

S.J. Shrubsole's Castellani Etruscan Revival micro mosaic brooch, London, circa 1860 THE WINTER SHOW

KENTSHIRE

[Start a Conversation](#)

This rare, 19th-century copy of a late Iron Age gold torc necklace is based on the original, which was discovered on the island of Øland in 1857.



Kentshire's Virtual Shop at The Winter Show Online 2021 THE WINTER SHOW

Kentshire features an pave set French 19th century turquoise hinged bangle detailed with a rose cut leaf design in front in silver topped 18K gold which comes with original fitted box.

[BACK TO GALLERY](#)



Antique pavé turquoise bangle, France
Circa 1870
French control marks
6 1/4 inches inner circumference, 1 inch wide at leaf.

Description
An antique pavé turquoise hinged bangle bracelet, the front adorned with a leaf with a rose-cut diamond vein, in sterling silver and 18k gold. France, original fitted case.

\$21,500

KENTSHIRE

[Send an Email](#)

[Send a Text](#)

[Video Chat](#)

Video Chat Hours:
11:00AM - 05:00PM
(EST)

Telephone:
+1 (212) 421-1100

[Scroll for additional images](#)
↓

Kentshire's turquoise French bangle, circa 1870 THE WINTER SHOW

Kentshire's authenticated Rene' Boivin's Art Deco Geometric diamond and sapphire ring in platinum cleverly set with calibre cut sapphires over the round diamond and round diamonds set underneath the sapphire.



René Boivin
René Boivin Art Deco diamond and sapphire ring,
France
Circa 1935
Certificate of authentication by Françoise Cailles
Ring face: 1/2 inch wide. Size 4 3/4.

Description
An Art Deco sapphire and diamond two-stone ring of juxtaposed design with calibre sapphire and diamond borders, in platinum. René Boivin, France; accompanied by a certificate of authentication by Françoise Cailles. Atw diamond 1.95 ct., sapphire 2.18 ct.

... MORE

\$72,500

KENTSHIRE

[Send an Email](#)

[Send a Text](#)

[Video Chat](#)

Video Chat Hours:
11:00AM - 05:00PM
(EST)

Telephone:
+1 (212) 421-1100

[Scroll for additional images](#)
↓

Kentshire's Rene' Boivin Art Deco Diamond, Sapphire and Platinum ring, circa 1935 THE WINTER SHOW

A LA VIEILLE RUSSIE, INC.

[Start a Conversation](#)

Moonstones are typically cut en cabochon, but they can also be cut into interesting shapes. This is a difficult process requiring great skill because of the nature of the stone. That the moonstones in this bracelet are so exquisitely carved demonstrates remarkable craftsmanship.



A La Vieille Russie's virtual shop at The Winter Show Online 2021 THE WINTER SHOW

A fine example of a tread bracelet inspired by the machines in factories during WWII. During the Retro period, 1940s these bracelets in different shapes, weights and yellow and rose gold were popular among women who desired a statement piece. They look as modern today as the day they were designed.

[BACK TO GALLERY](#)

Gold Machine Aesthetic Bracelet

Ca. 1940

18k gold

Unsigned

Length: 7 inches

Description

18k gold concave link bracelet.

Italian, ca. 1940.

\$12,500

A LA VIEILLE RUSSIE, INC.

[Send an Email](#)

Telephone:

+1 (212) 752-1727

Scroll for additional images



A La Vieille Russie's Retro Tread Bracelet in 18K gold THE WINTER SHOW

A La Vieille Russie’s Victorian lozenge pendant earrings with blue enamel outlining old mine cut diamonds in a gold setting, circa 1870 offers a high dose of character and personality and can go more dressed up or down with contemporary fashion.

[BACK TO GALLERY](#)



Victorian Diamond and Enamel Pendant Earrings
Ca. 1870

Diamond, enamel, gold

Unsigned

Length: 2 1/2 inches

Description

Victorian lozenge-form pendant earrings with old-mine diamonds and dark blue enamel borders, set in gold.

English ca 1870. (Approx. 10 cts total).

\$52,000

A LA VIEILLE RUSSIE, INC.

[Send an Email](#)

Telephone:

+1 (212) 752-1727

Scroll for additional images



A La Vieille Russie's Victorian enamel and old cut diamond earrings. THE WINTER SHOW

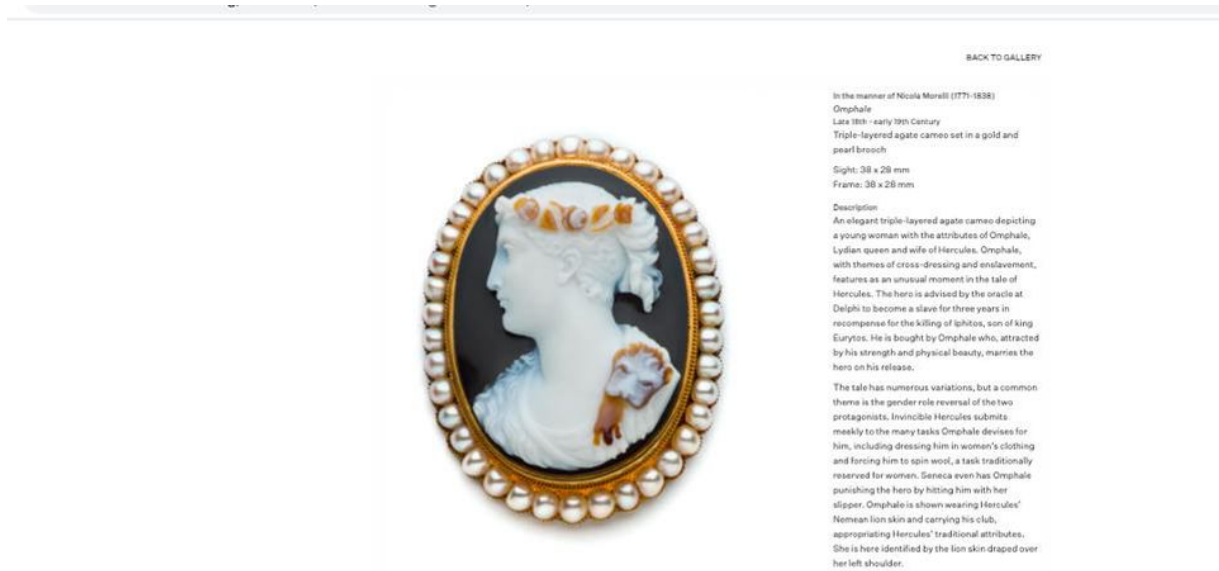
THOMAS HENEAGE ART BOOKS

[Start a Conversation](#)

Conjoined profile portraits of Prince Charles Edward Stuart, "The Young Pretender" (1720-88) and Prince Henry Benedict Stuart, Cardinal Duke of York (1725-1807).

Thomas Heneage Art Books Virtual Shop At The Winter Show Online 2021 THE WINTER SHOW

Thomas Heneage's storied cameo brooch dating to late 18th-early 19th century in triple layered agate set into gold with a pearl surround. While perusing this item, you should definitely read the intricate tales on the subject of the brooch.



Thomas Heneage Art BooksL Late 18th-early 19th century triple-layered agate cameo brooch THE WINTER SHOW



Beth Bernstein

I am a jewelry historian, jewelry expert and collector of period and modern jewel and a purveyor of all things sparkly. I have a romance going on with the legend,... **Read More**